



DILWORTH



TO PHILADELPHIA →

CHAD'S FORD

15 16 17 18 19 20 21 22 23 24 25 26 27 28

V
U
T
S
R
Q
P
O
N
M
L



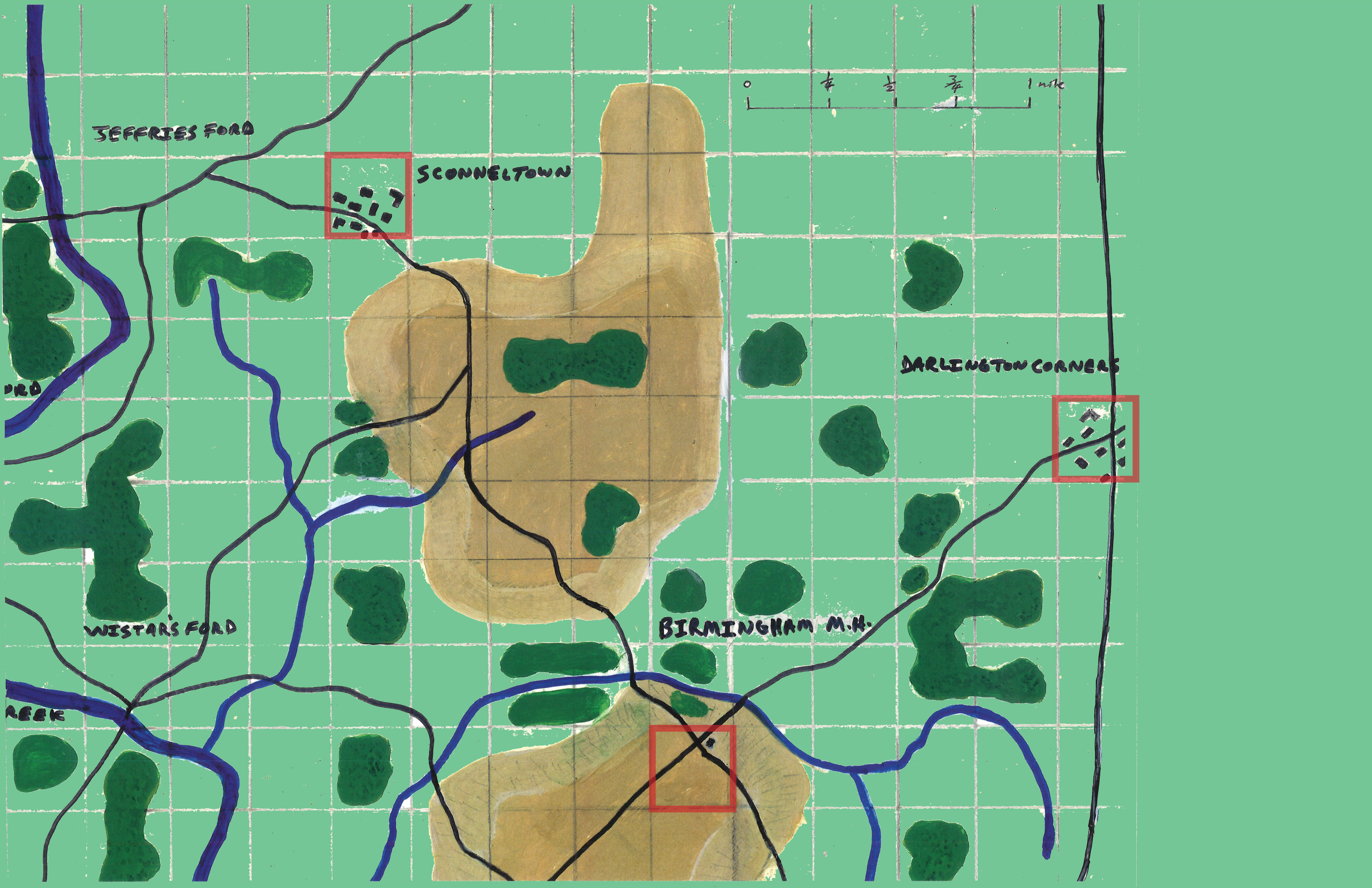
EAST BRANCH

WEST BRANCH

BUFFINGTON'S

BRANDYWINE





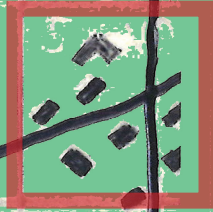
JEFFRIES FORD



SCONNELTOWN



DARLINGTON CORNERS



BIRMINGHAM M.H.



WISTARS FORD

REEK